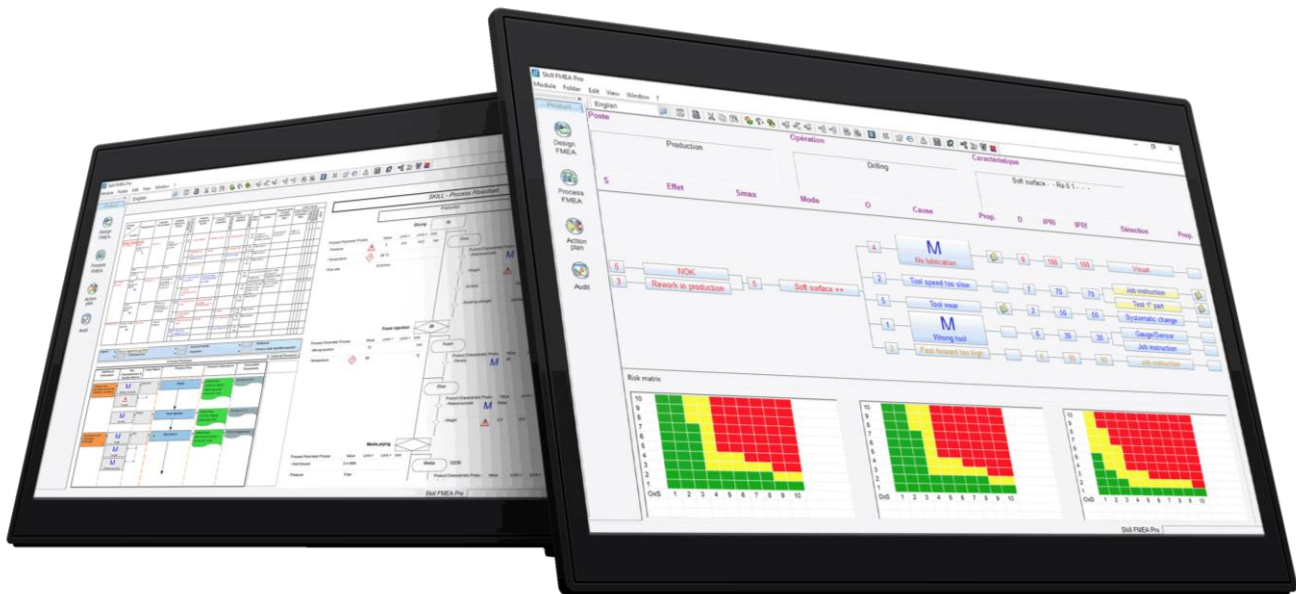



Skill FMEA Pro

The world leader in FMEA software since 1990



- ☑ DFMEA, PFMEA, Control Plan, Reverse FMEA
- ☑ AIAG 4th, VDA 6, ISO 9001, IATF 16949, AIAG / VDA
- ☑ Automatic capitalization into the generic FMEA
- ☑ Update and traceability for the audits
- ☑ Multi-users, multi-plants, multi-languages
- ☑ Intuitive interface to facilitate meetings
- ☑ Available in hosted version 
- ☑ Creation of the process flow chart
- ☑ Perfect consistency with control plans
- ☑ Job instruction
- ☑ FMEA control plan for the operators
- ☑ Action plans
- ☑ Special class characteristics (SCC)
- ☑ Automatic integration of CAD drawings

1.500 CUSTOMER INSTALLATIONS WORLDWIDE





SKILL SOFTWARE

JUST ONE CLICK

SKILL SOFTWARE. In the field of quality management, Skill Software supplies softwares to industries worldwide since 1990.

PROALPHA GROUP. As FMEA specialist, Skill Software has joined the proALPHA group in 2021. The proALPHA group is the third largest provider of ERP for medium-sized manufacturing and trading companies in Germany.

> 7.700 customers worldwide > 181 partners > 1.550 employees > 50 offices

OUR SOFTWARES are validated by more than 1.500 customer installations worldwide. Their sustainability for 25 years is a guarantee of safety and constant innovations. Capitalize you knowledge in “just one click” to save time and money.



“Skill FMEA Pro” incorporates all the experience acquired for 25 years. It is the key reference for risks analysis and the world leader in FMEA software for automotive, aerospace, pharmaceutical, watch-making and jewelry industries. Every day, new sectors of activity are increasingly using “Skill FMEA Pro” for their risks analysis.



“Skill Infra Convert” appeals all companies working on CAD drawings. The automatically extraction of information is a major asset to save thousands of man-hours and to avoid data entry errors.



“Skill Production Reader” : From the control plan to the job instruction... From the control plan, the operator directly accesses the characteristics to be checked at the workplace, with the exact values / tolerances.

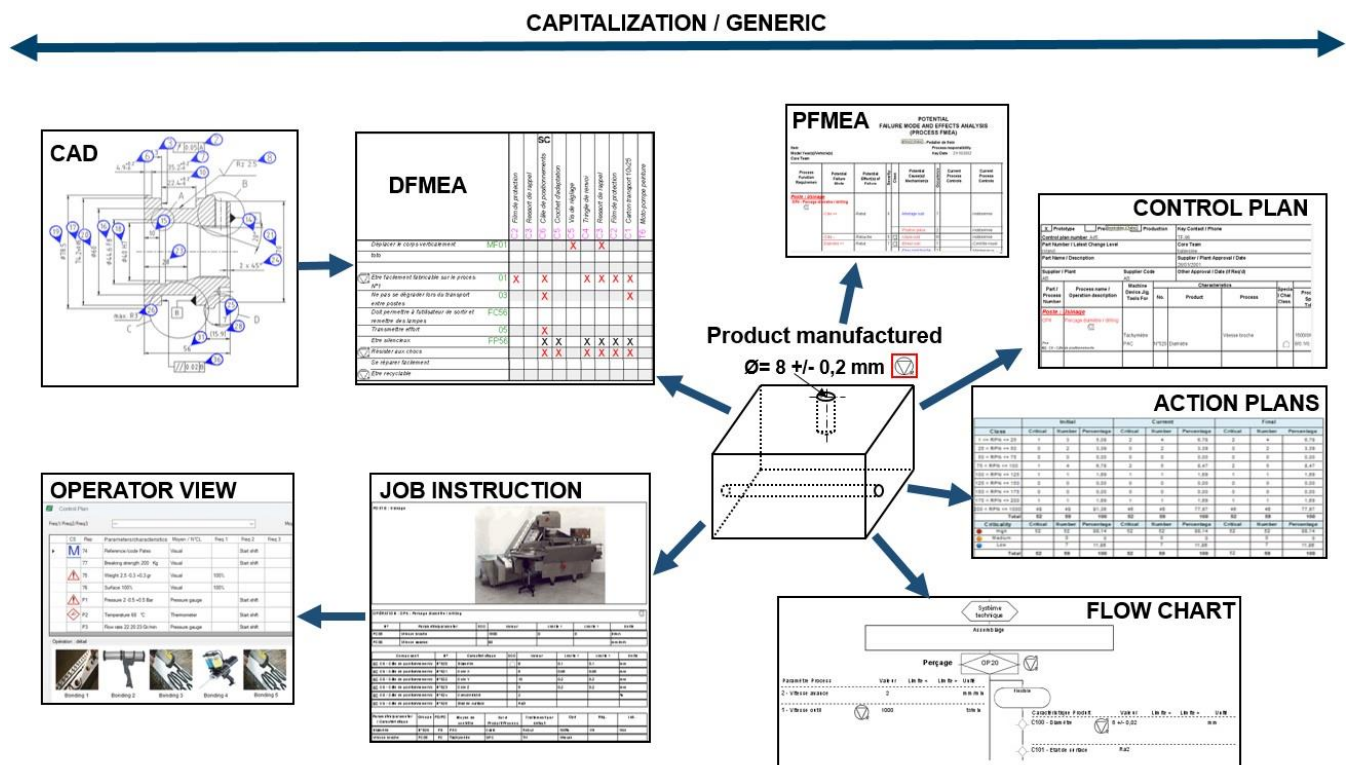


“Skill Action Pro” is dedicated to action plans. Our clients use this software to remove all Excel files and thus to have a global overview of their action plans through a user-friendly and secure web software.

CUSTOMERS: Our clients include many of the highest-performing industrial companies in the world, with the common goal of improving efficiency, quality and simplicity. A short list of our customers is available on our web site. The entire list can be required per mail.

Skill FMEA Pro design and process

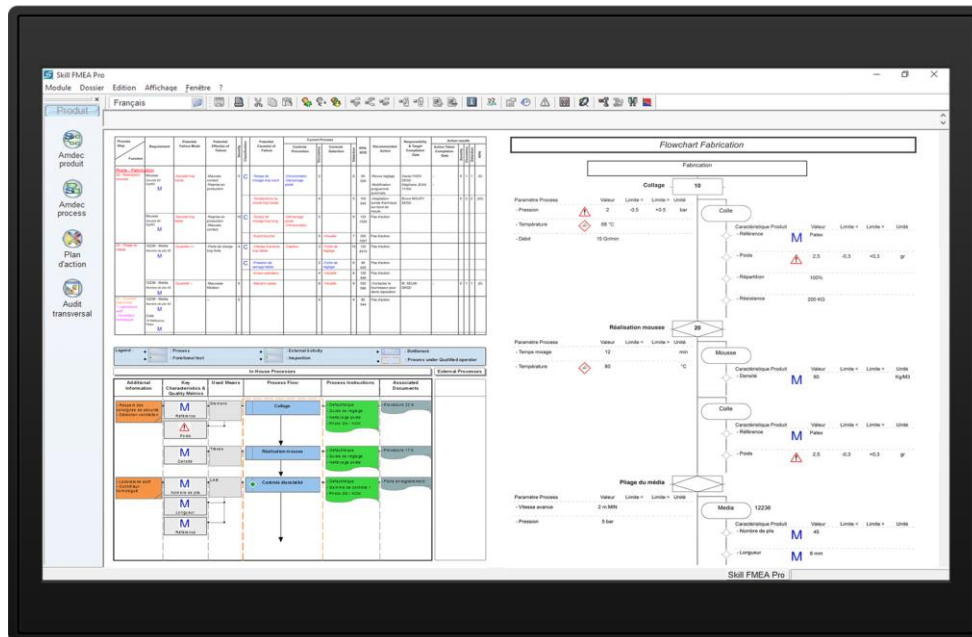
SKILL FMEA PRO is dedicated to the creation and the update of the FMEA. Special characteristics are managed at design and process FMEA, synchronized with control plans and in perfect consistency with job instruction that are created automatically. Save time and money with the world leader FMEA software.



SYNCHRONIZATION OF FMEA: DESIGN, PROCESS AND CONTROL PLAN : Skill FMEA Pro gives you perfect consistency between design and process. Special characteristics are managed at all stages. The software generate the diagram, the control plan and the job instruction and centralize the action plans. The guiding thread: synchronization and automatic capitalization.

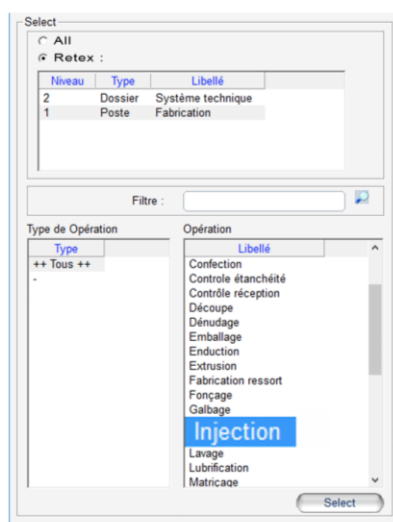
Compliance with audit and dynamic retex

COMPLIANCE WITH AUDIT: Skill FMEA Pro is validated by more than 1,500 customer installations worldwide. Each audit was successful. The precision and the overlapping of the datas bring you exactness in your study and a perfect coherence over all your documents generated. No more discrepancies during your audit due to inconsistent information. Consistency is also ensured between design and process FMEA, control plans, flow chart, job instructions and special class characteristics. Skill FMEA Pro generates a complete audit file.

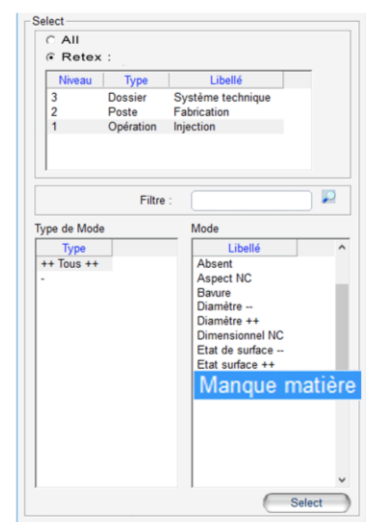


DYNAMIC RETEX : In order to accelerate input, increase its reliability and assist with it, Skill FMEA Pro uses a knowledge network, so that the response to the following stage is always given, based on experience previously capitalized by the system. An example for a given operation is only to show the possible modes, and for a given mode only to show the possible causes... The knowledge network must give the user the next stage, without having to view or search from among the thousands of terms in catalogues. The precise wording is unimportant: some ten terms are shown, and the choice is therefore instantaneous. You capitalize your knowledge.

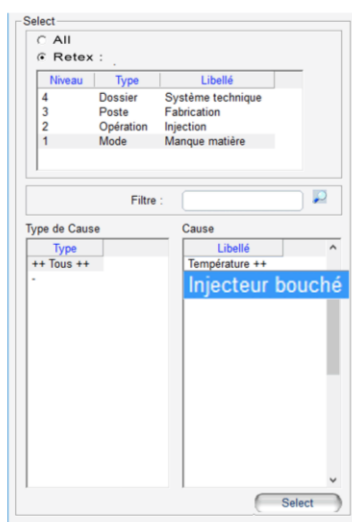
Operation



Mode

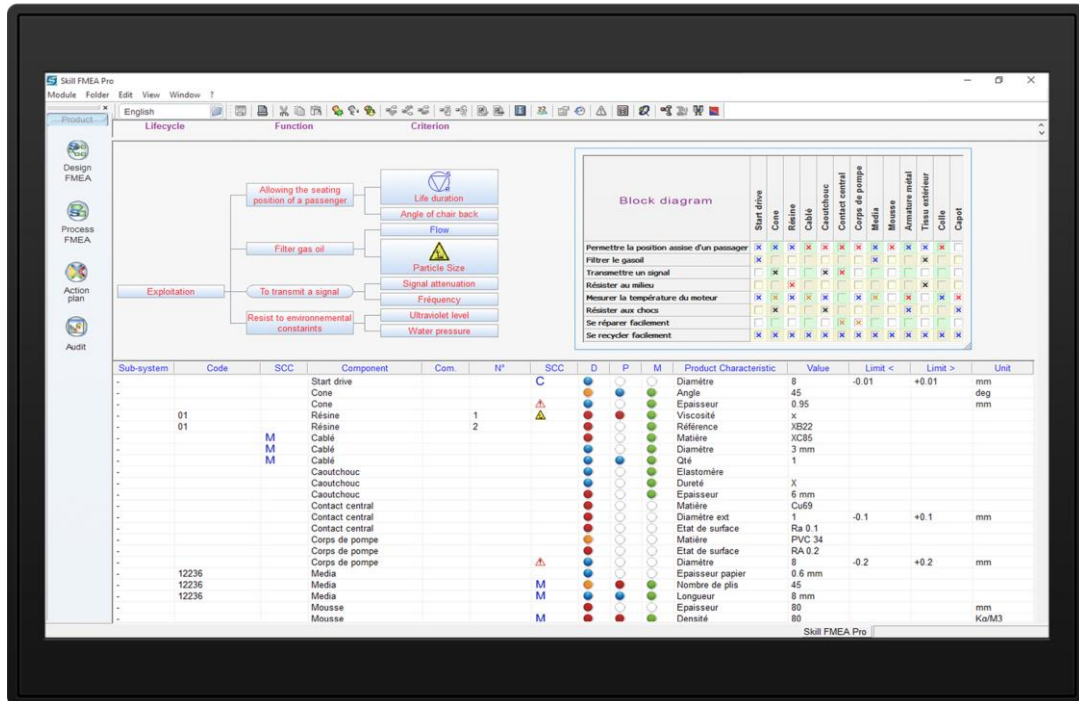


Cause

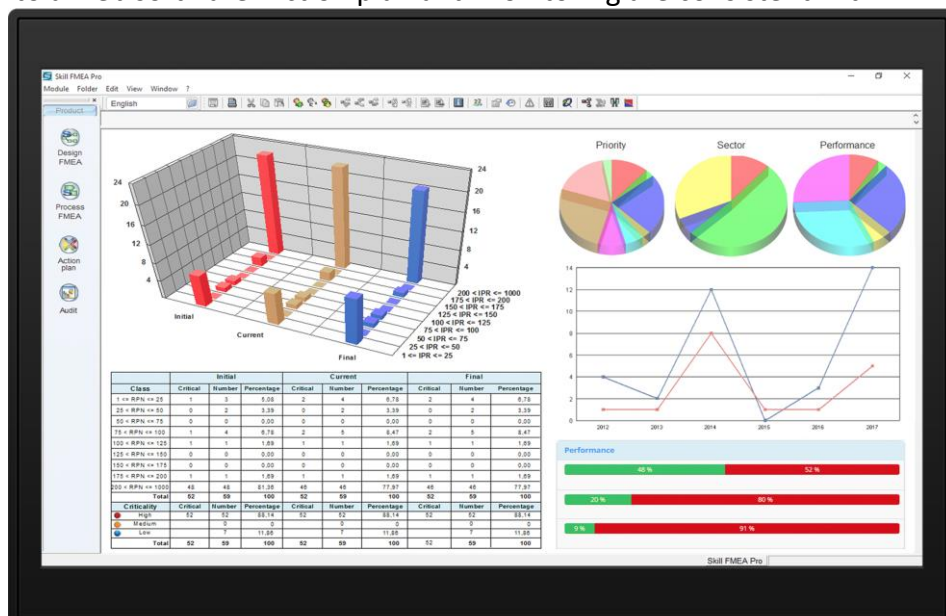


Functional analyses and action plans

FUNCTIONAL ANALYSIS: Skill FMEA Pro uses the life cycle (Life Cycle Cost) to analyse the functions expected by the client and their specifications. The functional criteria define the level of constraints. The special characteristics defined by the client's schedule of specifications are incorporated in the product functional analysis.

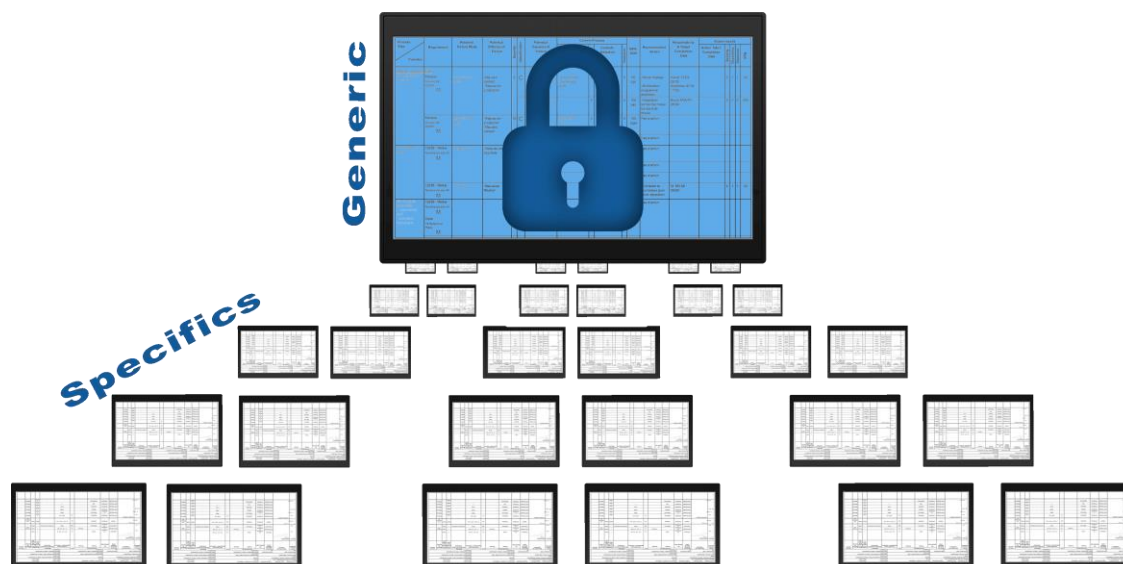


ACTION PLANS : For each cause, several actions can be put in place to reduce the criticality values through a reduction of the frequency or detection. The portfolio of actions is centralized for the entire company, enabling everyone to access directly all the actions to be accomplished for all the FMEA files managed by Skill FMEA Pro. The link with "Skill Action Pro" allows the centralization of all actions of the company into a web software. Action plan and monitoring are consistent with FMEA.

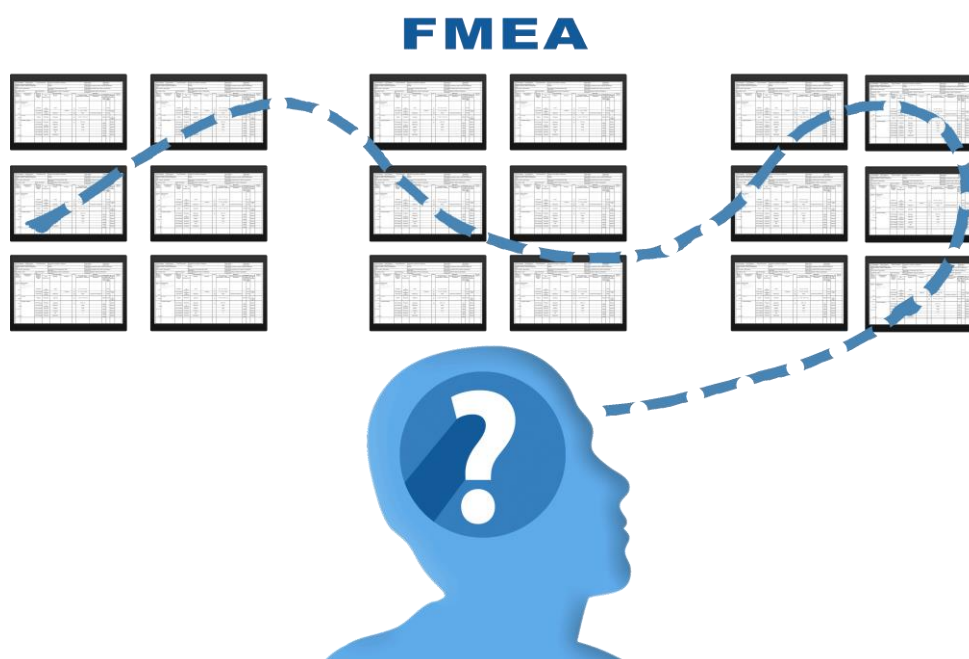


Capitalization and transversal audit

CAPITALIZATION / GENERIC: The specific FMEAs are created from generic FMEAs. A generic FMEA capitalizes, under control, on all the knowledge added in its specific fmeas. The specific FMEAs are created from generic FMEAs; every enrichment of a specific fmea is capitalized in the generic fmea. Knowledge is gradually built upon by accumulating experience from all the studies. Use of the generic FMEAs is instantaneous, and capitalization is guaranteed.

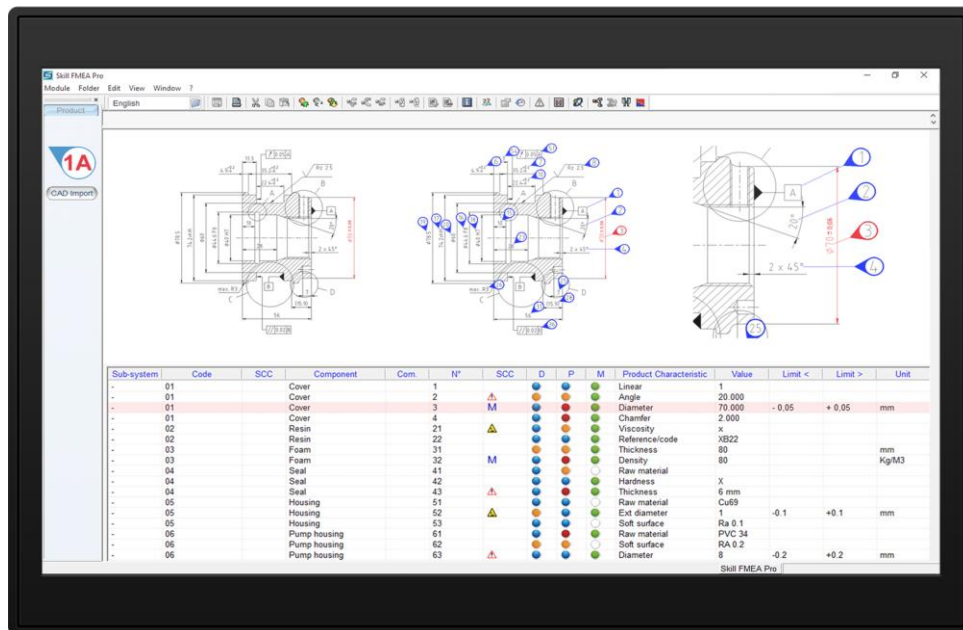


TRANSVERSE AUDIT: The transverse audit module instantly diagnose and homogenize all the design and manufacturing processes of the quality system. In the event of a client non-compliance it is important to make a transversal analysis of the same problems in hundreds of studies, or to be familiar with all the actions undertaken in response to a given cause. Transversalize your FMEA in one click.

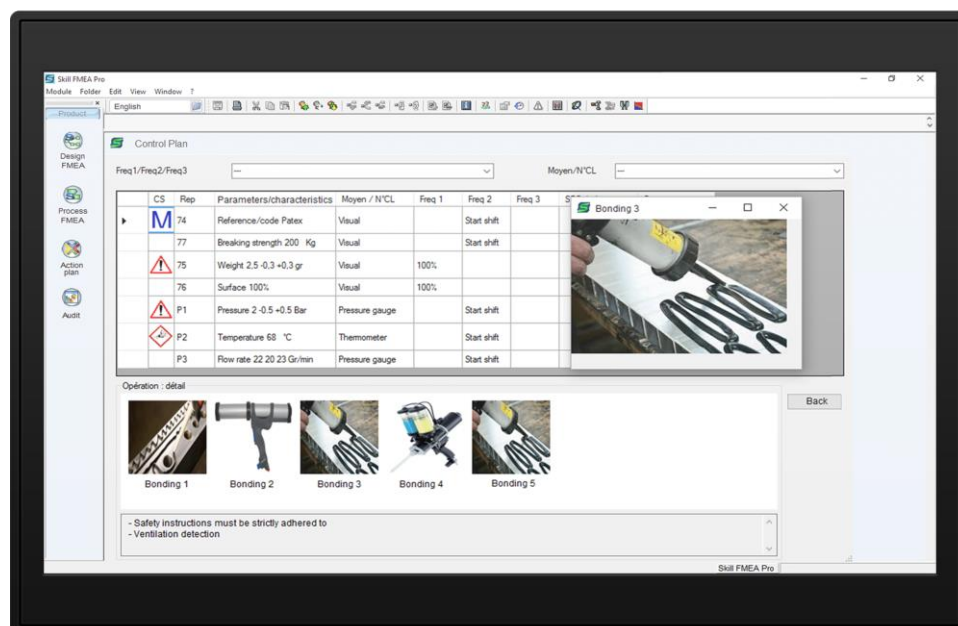


CAD integration and Dynamic update on the workstation

AUTOMATIC INTEGRATION OF CAD DRAWINGS: “Skill Infra Convert” module scans CAD drawing, automatically extracts all dimensions and their tolerances. They are stamped, numbered and integrated into the quality control plan of the FMEA in 1 click. Integrate components into the FMEA: 1 click!

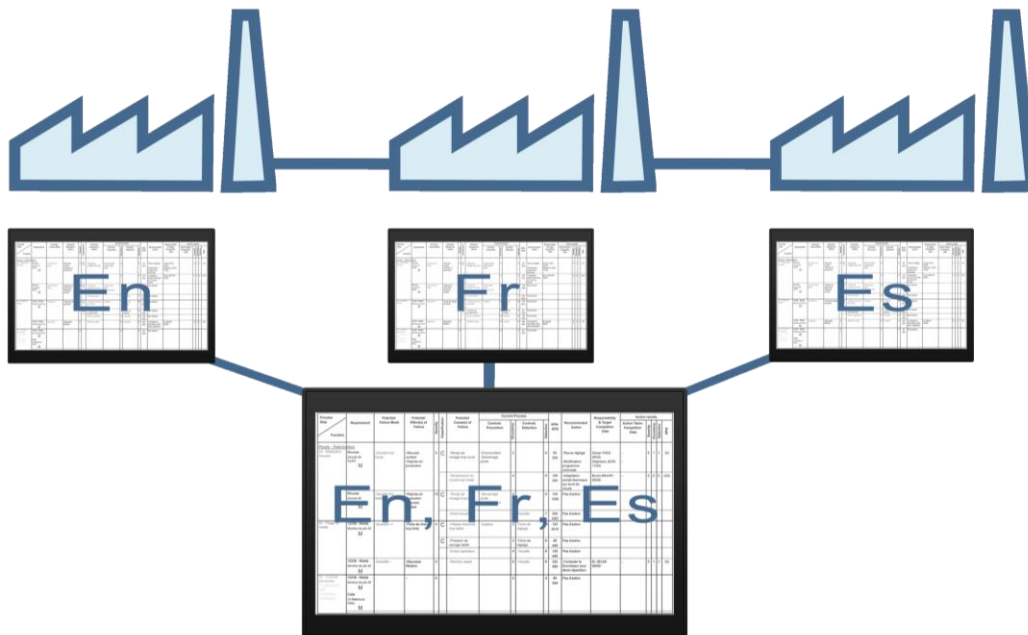


FROM THE CONTROL PLAN TO THE JOB INSTRUCTION: From the control plan, the operator directly accesses the characteristics to be checked at the workstation, with the exact values / tolerances. The updating of a plan instantly affects the production station. Dynamic update on the workstation.



Configurations

MULTI-LANGUAGES AND MULTI-PLANTS: Skill FMEA Pro is, of course, available in several languages (English, German, French, Spanish, Italian, Chinese, Russian, Hungarian, Turkish, Czech, Portuguese, and Polish). The translation option enables FMEAs to be “brought to life” through dynamic updating of the central synchronized glossaries, and therefore to capitalize on all newly translated terms. In multi-plants configuration, each user shares and synchronizes the knowledge. The capitalization is for the entire group. Capitalization in multi-languages and multi-plants.



CONFIGURATIONS: Skill FMEA Pro is available in a mono or multi-site network, for installation on the customer's premises or in hosted mode. Licenses are simultaneous. You can therefore install Skill FMEA Pro on N computers and only with X simultaneous connections. Hosted mode offers many advantages. Your IT department is free of any constraint. No installation is required. Indeed, this option includes installation, data hosting, backups and security. Ask for your free presentation !

